

TECHNICAL SPECIFICATIONS

Engine

Cooling	Air Cooled
No. of Cylinders	1
Type (CG or CB)	CB
Balanced or Non Balanced	Balanced
Displacement/Capacity	250 CC
Max. Power	13.0kw/7500r/min
Max. Torque	18.5N.m/6000r/min
Bore x Stroke	70x65
Compression Ratio	9.0:1
Starting	Electric/ Kick Start
Top Speed	105 kmph
Mileage	2.5Liters Per 100 kms
Carburetor	PZ32

Transmission & Chassis

Clutch	Wet Multi Plate
Gear Box	5 Speed
Front Sprocket	17
Rear Sprocket	50
Chain Size	428H
Number of Chain Links	134



www.raybarmotorcycles.com /raybarmoto

Suspension

Front	Inverted
Rear	Mono Shocker

Brakes

Front Brake	Disc
Rear Brake	Disc

Wheels & Tyres

Wheel Size Front	1.85x21
Wheel Size Rear	2.15x18
Tyre Size Front	3.00-21
Tyre Size Rear	4.60-18
Tyre Type	With Tube

Electrical / Control System

Battery	MF-12V9AH
Head Lamp	12V/14W
Head Lamp Type	LED
Tail/Stop Lamp	12V/1.4W/0.3W
Tail Lamp Type	LED
Turn Signal Lamp	12V/1.2W
Turn Signal Lamp Type	LED
Ignition System	A/C CDI
Speedometer	Digital

Dimension

Length	2270mm
Width	790mm
Height	1270mm
Wheelbase	1448mm
Ground Clearance	290mm
Fuel Tank Capacity	12Liters
Kerb Weight	152kg

Authorised Dealer:

VOLCANO250



VOLCANO 250

RIDE THE FORCE

Claim whatever comes your way as Volcano earns you the right of way all the way. Designed to deliver maximum speed with a powerful air cooled engine, this off roader gives you ultimate control. Unleash the force of this devil and feel the power to roam just about anywhere.



Stylish LED Indicators & Tail Lamp



Digital Speedometer



Front & Rear Foot Rest



Inverted Telescopic Shocker



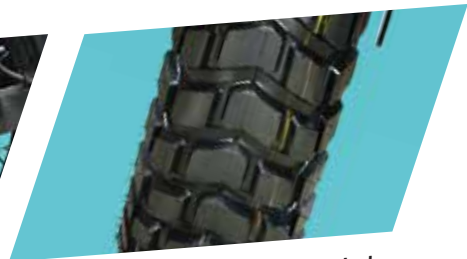
LED Lamp in Headlight



Mobile Charger



Front & Rear Disc Brake



Wider Tyres with Special Treads Pattern

 **Raybar**

AVAILABLE IN THREE EXCITING COLOURS THAT WILL SET YOU APART...



Carbon Black



Pearl White



Fiery Red

